



Let's
Go!

EXPERIENCE
MISSIONS **24**

EXPERIENCE MISSIONS 2024

TABLE OF CONTENTS



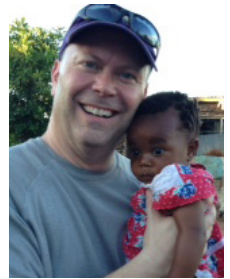
Pastor Rob's Report.....	4
BCA Missions Advisory Team.....	5
Missions Giving Pledge.....	6
BCA Missions Giving.....	7
STORM Trips.....	8
Global Church Partnerships.....	9
BCA Missionary Network.....	12
What Does It Cost to Keep a Missionary Family on the Field?....	24
Support Ministries.....	25
Missionary Prayer Guide.....	26

PASTOR ROB'S REPORT PRAY - GIVE - GO

Acts 1:8 - But you will receive power when the Holy Spirit comes on you; and you will be my witnesses in Jerusalem, and in Judea and Samaria, and to the ends of the earth.

At Bethany, we believe that Christ has given us four primary purposes:

- To **KNOW** God through worship and His Word,
- To **GROW** through discipleship and in small groups,
- To **SERVE** others by using our gifts for ministry, and
- To **SHARE** our faith on three levels: personally, in our community, and around the world.



One of the greatest privileges we can enjoy in this life is to be an ambassador of Jesus Christ. Just think about it! The Lord of the Universe commissioned us to take His hope-filled message to the entire world. He did not create an exclusive class of people to do it; He included every Christian in this calling. Wow!! We are God's plan to reach the world with the message that eternal life is available through Jesus. What an awesome honor to share the greatest news in the world...with the whole world!

In Acts 1:8, the first believers were told to go to Jerusalem, Judea, Samaria, and the entire world as witnesses for Christ. As we apply this mandate personally, we understand that Jesus is telling us to take His message to:

- **JERUSALEM** - our community
- **JUDEA** - our county
- **SAMARIA** - cross-cultural experiences within the US
- **WORLD** - cross-cultural experiences outside the US

I want to encourage every follower of Christ at BCA to commit to missions by jumping in with both feet. Experience missions by praying, giving regularly to support missionaries, and going on a Short-Term OutReach Missions trip (see STORM Trips on page 8).

At Bethany, we have strategies to support both local missions and global missions. During Experience Missions '24, we want to emphasize global missions and the global outreach we support through our 80 missionaries and missionary projects. Last year, our BCA family championed global missions in a BIG way by giving nearing \$300,000! Working hand-in-hand with our missionary network, BCA is making a difference in countless ways around the world, including our continued commitment to our Global Church Partnership projects in Albania, Cuba, Indonesia, eSwatini, and Portugal, along with Medical Missions.

Your gifts, prayers, and engagement contributes much to the work of God around the world. As we explore our global role together, I pray that you will experience missions in a deep and personal way and strengthen your own commitment as an ambassador of Christ.

God bless you!

BCA MISSIONS ADVISORY TEAM

Dr. Rob Carlson, Lead Pastor
Rod & Sherry Boyd, Global Missions Pastor
Bill Follett, Missions Team Chair

Missions Team Members:
Jacob & Natasha Close, Jacob Davis,
Dean & Kryssia Lincoln, Lilly Ann Rusher, and Doug Whitfield
(*not pictured*) Fenton & Pat Rees, Donna Waldal, and Carol Whitfield



BCA MISSIONS ADVISORY TEAM

The Missions Advisory Team serves in many ways throughout the year to support our many missionary families and missionary projects, including:

- Overseeing the BCA missions finances
- Reviewing the needs of missionaries annually and making adjustments as needed
- Maintaining relationships with our missionaries through correspondence and prayer
- Meeting and hosting missionaries at BCA during their times of itineration
- Hosting monthly Missions Spotlights for visiting missionaries
- Planning and hosting our annual “Experience Missions” convention and banquet
- Planning STORM trips
- Traveling on STORM trips and planning trips for future missions initiatives

THANK YOU FOR YOUR SERVICE!

WHAT IS A MISSIONS GIVING PLEDGE? (AKA FAITH PROMISE)

- A Missions Giving Pledge is a means of giving to God outside of your current resources.
- A Missions Giving Pledge is not based on your known resources, but on your faith.
- A Missions Giving Pledge is an agreement between you and God.
- A Missions Giving Pledge is a plan for giving to God's work in addition to your regular tithes and offerings.
- A Missions Giving Pledge stretches the faith of the giver past its current boundaries.
- A Missions Giving Pledge enables every Christian to have a part in fulfilling the Great Commission.

Jesus said, *"Go into all the world and preach the gospel to all creation."* (Mark 16:15) Missions Giving Pledges allow everyone to participate in the missionary effort of the church!

(Reprinted from the Assemblies of God World Missions brochure, "What is a Faith Promise?" www.worldmissions.ag.org)



BCA MISSIONS GIVING

2000 - 2023 MISSIONS GIVING

Missions Giving Pledge	\$3,742,511
GCPs + Special Projects	\$2,198,002
Children / BGMC	\$73,309
Youth / Speed the Light	\$94,109
Men / Light for the Lost	\$149,033
Women / Touch the World + Projects	\$71,934
Seniors / Teen Challenge	\$287,410
Total	\$6,616,308

2023 MISSIONS GIVING

Missions Giving Pledge	\$171,499
GCPs + Special Projects	\$53,423
Children / BGMC	\$904
Youth / Speed the Light	\$10,263
Men / Light for the Lost	\$3,963
Women / Touch the World + Projects	\$2,395
Seniors / Teen Challenge	\$46,409
Total	\$287,471

2024 MISSIONS GIVING GOALS

Missions Giving Pledge	\$165,000
GCPs + Special Projects	\$115,000
Children / BGMC	\$5,000
Youth / Speed the Light	\$5,000
Men / Light for the Lost	\$5,000
Women / Touch the World + Projects	\$5,000
Seniors / Teen Challenge	\$15,000
Total	\$315,000

STORM TRIPS

(Short-Term OutReach Missions)

WHY STORM THE WORLD?

- It will build your worldview and give you a heart for the lost
- It will mature your life and the lives of family members you take with you
- It will give you a cross cultural experience you will never forget
- It will help you understand the vital needs and work of missions
- It will allow you to be a blessing to others like never before
- It will allow God to touch your heart and clarify your Christian call
- It will be a once-in-a-lifetime opportunity to build relationships with people from around the world

PORTUGAL MAY 2024

- Establish a new Global Church Partnership
- Establish relationships with local pastors and churches
- Evaluate projects at Bible College

SUMBA, INDONESIA JULY 2024

- Construction of new boy's dorm and other improvements at the House of Hope
- Medical missions
- Playground construction and children's outreach

BOLIVIA JULY 2024

- Bethany Deaf Assembly Storm Trip
- Outreach and ministry to the deaf community in Bolivia

ALBANIA AUGUST 2024

- Youth and Young Adult Conference
- Compassion and Evangelism outreaches

2025 TRIPS

- Cuba
- Portugal
- Sumba

BCA GLOBAL CHURCH PARTNERSHIPS

The goal of BCA's Global Church Partnerships is to expand BCA's global ministry by working with our AGWM missionaries to connect BCA's people and resources with local pastors, churches, and their communities around the world.

BCA'S GLOBAL MINISTRY TEAMS CAN PROVIDE

- Pastoral training & support
- Child sponsorship programs
- Property purchasing & church planting
- Medical & care teams
- Vocational training
- Children's & youth ministry & training
- Planning & construction of facilities & wells
- Community compassion outreach
- Sustainable project development
- Micro-business development

Do you have a heart for the lost and those in need in remote and unreached areas of our world? Join a GCP STORM Team to go on a trip and please support these ministries with your prayers and finances.

TOGETHER, WE CAN MAKE A DIFFERENCE!

Contact the Missions' Director for more information: GlobalMissions@bcachurch.com.



ESWATINI | Established in 2013 --- 6 Trips

OUTREACH: 3 Children's Community Outreaches (about 2,100 total children). Ministry to 32 area schools (about 16,000 total students). Community Youth Outreach (about 300 students).

COMPASSION: Hospital visits (about 250 patients and family members). Visits to orphan-led homesteads (about 45 homesteads). Bible School scholarships (8 students a year).

CONFERENCES: Pastoral Leadership Conference. Children's Leadership Conference. Youth and Youth Leaders' Conference.

CONSTRUCTION & WATER: Purchased land for churches. Drilled water wells. Playground design, construction, and maintenance. Construction on church buildings, preschool centers, orphanages, and pastor homes.

BCA GLOBAL CHURCH PARTNERSHIPS



SUMBA | Established in 2015 --- 7 Trips

MEDICAL: Medical clinics in 12 rural villages (3,000 patients).

HOUSE OF HOPE: Scholarships for 30 kids at the House of Hope (\$1,500 a month for \$120,000 given to date). ESL and Life Skills classes for House of Hope students.

CONFERENCES: Pastors' Conference (80 pastors and wives from across the island). Worship Conference (75 leaders from island churches). Pastoral Leadership and Marriage Conference (60 pastors and wives).

CONSTRUCTION & WATER: Construction and funds raised for local churches. Water truck and multiple tank purchases. Water tank construction in 19 local villages.



CUBA | Established in 2017 --- 3 Trips

OUTREACH: Children's VBS Outreaches at 4 churches (2,000 total children). Youth outreach (300 students).

RESOURCING: Projectors and iPads loaded with children's ministry curriculum given to 4 churches.

CONFERENCES: Children's Ministry Training at 3 churches (400 teachers from dozens of area churches). Marriage Conference (70 couples). Men's and Women's Conferences (500 people).

CONSTRUCTION: Several rounds of construction and funds raised for 2 rural churches.

BCA GLOBAL CHURCH PARTNERSHIPS



ALBANIA | Established in 2018 --- 5 Trips

MEDICAL: Medical clinics in rural areas.

OUTREACH: Rural home visits, food, and clothing provision. Purchased van for Rural Outreach Ministry.

CONFERENCES: Leadership Training and 3 Bible School Trainings (120 people). Pastors and Wives Conference (50 people). Women's Conference & Victims of Domestic Violence Dinner (300 people).

CONSTRUCTION: Purchased land and construction on multiple churches.



MEDICAL MISSIONS | Doctor Pat & Fenton Rees --- 16 Trips

In addition to medical clinics and electrical improvements to our Global Church Partner locations, since 2012, Doctor Pat and Fenton Rees have been helping at hospitals in Burundi, Gabon, and Uganda. Pat provides surgical services and training, and Fenton helps maintain the medical equipment and electrical systems. BCA helps support training of Christian doctors and special medical projects for these hospitals.

BETHANY CHRISTIAN ASSEMBLY GLOBAL CHURCH PARTNERSHIPS

AND MISSIONARY NETWORK

INTERNATIONAL & US MINISTRIES

Mark & Reneé Barclift
Daryel & Rachel Erickson
Mark & Amy Flattery
Rick & Ruth Johnson
Nick & Peggy LeFors
Steve & Linda Long
Terry & Marsha Peretti
Steve & Amy Shoop
John & Beth Wilson
Doug & Kay York

EUROPE

Alan & Michelle Ambrose
Brent & Bria Colby
Kara Cusic
Jeff & Pam Gregory
Glen & Dana Johnsen
Dan Johnson
John & Kristen Koeshall
Ryan & Angela McCullough
Sean Mills
Chris & Heidi Ness
Kurt & Stephanie Plagenhoef
Lisa Russi
Dan & Danita Taylor
Ryan & Christy Thomas
Nancy Valnes

EURASIA

Melody Jamieson
10 Missionaries in Sensitive Countries

ASIA PACIFIC

Stephen & Debbie Alsup
Seth Buikema
Dave & Gigi Kenney
Waldemar & Rosemarie Kowalski
Michael & Sheryl Langford
Mike & Diane Masse
Everett & Evelyn McKinney
Mark & Sunny Rodli
Mike & Chelly Rody
Jack Rozell
Maddy Simpson
David & Paula Stanislaus
John & Korie Taylor
John Vincen
Jonathan & Mary Winter

NORTHERN ASIA

2 Missionaries in Sensitive Countries

GCP: CUBA

Daniel Irizarry

GCP: PORTUGAL

Dan Taylor

GCP: ALBANIA

Kurt Plagenhoef

LATIN AMERICA & CARIBBEAN

Jamie & Berly Bello
Dave & Carol Ellis
Daniel & Therese Irizarry
Brooke Miller
Max & Sylvia Rivera
Chris & Heather Schneider
Dave & Patti Thomas

GCP: MEDICAL MISSIONS

Albania, Burundi, Gabon, Indonesia, Uganda

GCP: ESWATINI

Missionary TBD

AFRICA

Josiah & Kayla Bridgewater
Erik & Kayla Erickson
Pat & Suzanne Hurst
Matt & Debbie Mann
Mike & Kari Ness
William & Sonia Shaw
Weston & Allison Stover
Jay & Cheryl Taylor

GCP: INDONESIA

Mike & Diane Masse // House of Hope Sumba
John Taylor // ICA Surabaya

BCA MISSIONARY NETWORK

On the following pages, you will find an alphabetical listing of all the missionaries you support at BCA. For more information, check out the missionaries' websites, blogs, or Facebook pages. *Please note that BCA supports 10 missionaries who work in sensitive countries around the world and their info has not been included in this booklet for their own safety. If you would like information on these missionaries, you can contact rodb@bcachurch.com.*



Stephen & Debbie Alsup AGAPE HOPE

- > Serving those on the forefront of global ministry in order to enhance the life quality, ministry effectiveness, and longevity of missionaries.
- > The vision is to refresh the weary, renew the hurting, restore the broken, and rekindle the faint. (Isaiah 43:2)

CONNECT: slalsup@comcast.net | facebook.com/stephen.alsup.79



Alan & Michelle Ambrose AUSTRIA

- > Serving with the local church and university students in Austria to create a relevant outreach.
- > Leading Bible studies, discipleship groups, outreaches to students, and community-building events.

CONNECT: Ambrose.Alan@gmail.com | ambroseinfo.com
facebook.com/alan.ambrose.37



Mark & Reneé Barclift INTERNATIONAL MINISTRIES

- > Vice President for Information Technology and Media at Global University.
- > Using traditional and social media for evangelism, discipleship, and ministry training.

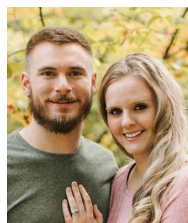
CONNECT: mbarclift@gmail.com | facebook.com/mark.barclift



Jamie & Berly Bello DOMINICAN REPUBLIC

- > Directing National Teen Ministries in the DR, in addition to developing music and worship ministries.
- > Vision is to develop strategic teen ministries in every local AG church to win teens to Christ.

CONNECT: jamie@bellos.org | bellos.org
facebook.com/jamie.kruger.bello



Josiah & Kayla Bridgewater MALAWI

- > Serving the Children of Malawi & working with local churches to bring care to the orphans.
- > Working with National church to train and equip the church to effectively reach children for Christ.

CONNECT: connect@bridgewatermissions.com
facebook.com/josiah.bridgewater

BCA MISSIONARY NETWORK



SETH BUIKEMA THAILAND

- > Working alongside local pastors throughout the southern provinces of Thailand to plant churches.
- > Visiting pastors, evaluating and assisting with community needs to encourage and empower believers.

CONNECT: seththailand98@gmail.com
facebook.com/seth.buikema



Brent & Bria Colby BELGIUM

- > Working with Continental Theological Seminary (CTS) to train ministry leaders to take the good news of Jesus throughout Europe.
- > CTS is based in Brussels but serves the 40+ countries supported by the Europe Region.

CONNECT: brentcolby@gmail.com | facebook.com/ColbyCommission
colbycommission.org | Instagram @ColbyCommission



Kara Cusic FINLAND

- > Serving in Finland with Project Rescue, reaching at risk women and children.

CONNECT: karacusic@gmail.com | facebook.com/kara.cusic



Dave & Carol Ellis LATIN AMERICA

- > Serve as Regional Directors for Latin America Caribbean.
- > Children, compassion, university ministry, and unreached people groups through church planting, training, and missions mobilization.

CONNECT: dellis@ag.org | facebook.com/LACWorldMissions
lacworldmissions.org | Instagram @LACWorldMissions



Daryel & Rachel Erickson FIRE BIBLE

- > Serving with Global Teen Challenge which started as a ministry to street gangs.
- > Traveling to worldwide GTC centers to train staff and teach programs.
- > Increasing Fire Bible translations and driving adoption.

CONNECT: Daryel.Erickson48@gmail.com | globaltc.org
facebook.com/daryel.erickson



Erik & Kayla Erickson ETHIOPIA

- > Working with Urban Tribes in planting high impact churches in the urban centers.
- > Ministering to and developing men and women who shape business, education and culture across Africa.

CONNECT: kayla.erickson@agwmafrica.org
facebook.com/Erik.Erickson.779 | facebook.com/Kayla.Stewart.7712

BCA MISSIONARY NETWORK



Mark & Amy Flattery NETWORK 211

- > Chief Executive Officer of Network211.
- > Network211 uses the internet to evangelize and disciple people around the world, including Global Christian Center, a worldwide online church.

CONNECT: mflattery1@outlook.com | network211.com
facebook.com/mark.flattery | mflattery.blogspot.com



Jeff & Pam Gregory EUROPE

- > Working in partnership with national churches in multiple countries, with a passion to see the story of Jesus accessible to all people, in their own culture and language, particularly through media and technology.

CONNECT: Jeff@gregory.info | gregory.info
facebook.com/jeff.gregory



Pat & Suzanne Hurst AFRICA

- > Area director for Central Africa.
- > Pat is the supervisor for all AGWM missionaries in this region, evaluating programs and directing missionary activity; Suzanne works as a nurse in relief and development, partnering with the Congolese church.

CONNECT: patrick.hurst@agwmafrica.org | facebook.com/patrick.hurst
hurstsinfrica.blogspot.com



Daniel & Therese Irizarry CUBA

- > Serving in Cuba, one of our Global Church Partnerships.
- > Ministering as AG Chairman of the Cuba Resource Committee, with a desire to see those in the US partner with those in Cuba to resource them through construction of churches, training national leaders, and more.

CONNECT: prayforcuba@gmail.com
facebook.com/daniel.irizarry.520



Melody Jamieson ESTONIA

- > Global University network representative for Baltics.
- > Church planting in Estonia and working with Focus Church in Tallinn.

CONNECT: mjamieson@regionsabroad.com
facebook.com/MelodyJamiesonInTallinn



Glen & Dana Johnsen BELGIUM

- > Serving at Continental Theological Seminary in Brussels since 1999.
- > Training pastors and church planters for Europe.

CONNECT: glen.johnsen@eu.agwm.org | thejohnsens.net
facebook.com/glen.johnsen

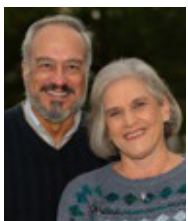
BCA MISSIONARY NETWORK



Dan Johnson SPAIN

- > Served in Guatemala for 12 years and Granada for 13 years.
- > Will be returning to Madrid, Spain, to be a part of the Oasis Center team.

CONNECT: dan.johnson@eu.agwm.org | danjohnsoniv.com
facebook.com/daniel.johnson.79230305



Rick & Ruth Johnson AGWM PERSONNEL & FAMILY LIFE

- > Working at AGWM headquarters for personnel and family life.
- > They onboard and train new missionaries and provide ongoing family support.

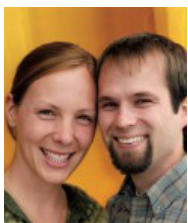
CONNECT: RickLeroyJohnson@gmail.com



Dave & Gigi Kenney INDONESIA

- > Serving in Indonesia.
- > Pastor of International English Service serving the entire English speaking community in Jakarta, both expatriate and Indonesian, with a church that ministers to both the individual and the entire family.

CONNECT: dave@iesjakarta.org | pastordaveies.blogspot.com
facebook.com/john.d.kenney.39 | iesjakarta.org



John & Kristen Koeshall GERMANY

- > Serving as pastors in Erfurt, Germany, since 2007.
- > Working with university students to help them grow in their relationship with Christ. They also plan regional and national retreats and bi-annual student-leader training weekends.

CONNECT: john.koeshalljr@eu.agwm.org | koeshall.com
facebook.com/jakoeshall



Waldemar & Rosemarie Kowalski INDONESIA

- > Starting an International Service in Bandung, Indonesia.
- > After many years of teaching and ministering, they are new missionaries to Indonesia and are studying their new language, Bahasa, and culture.

CONNECT: rosemarie.kowalski@gmail.com | gokowalskis.com
facebook.com/waldemark



Michael & Sheryl Langford PHILIPPINES

- > Ministering to Muslim people groups in the southern Philippine islands.
- > Michael is the Director of the Institute of Islamic Studies under the Asia Pacific Theological Seminary.

CONNECT: r.michael.langford@gmail.com

BCA MISSIONARY NETWORK



Nick & Peggy Lee LeFors INTERNATIONAL MINISTRIES

- > Gallaudet University in Washington DC- Evangelism and Discipleship.
- > Largest University in the world where students live and learn in American Sign Language.

CONNECT: nicholaslefors@usmissions.org | pastorlefors@icloud.com



Steve & Linda Long GLOBAL UNIVERSITY - ICI

- > Serving in International Ministries in over 200 countries through Global University.
- > New projects to train national workers to reach the unreached in their countries of Armenia, Burma, China, Cuba, India, and more.

CONNECT: Kennewick67@gmail.com



Matt & Debbie Mann BOTSWANA

- > Teaching and training at Assembly Bible College in Botswana.
- > Mentoring new pastors and assisting the national church with evangelism, discipleship, and leadership training. Building new tabernacle buildings, one of which was funded through BCA Missions giving.

CONNECT: matt.mann@agwmafrica.org
facebook.com/matt.mann.14811



Mike & Diane Masse SUMBA, INDONESIA

- > One of BCA's own, serving on the island of Sumba, Indonesia.
- > Working at the House of Hope to rescue vulnerable children from poverty, abuse and trafficking. They provide education, work and life skills, and the opportunity to learn about Jesus.

CONNECT: michael@masse.com
facebook.com/michael.masse.12321



Ryan & Angela McCullough WALES

- > Encourage, assist, and rehabilitate pastor-less churches.
- > Increase missionaries and provide pastor training.
- > Drive Alpha Course adoption.

CONNECT: McCulloughMissions1@gmail.com



Everett & Evelyn McKinney ASIA

- > AG missionaries since 1969.
- > Serving throughout Asia to train national ministers, leaders, Bible school teachers, Christian educators, and missionaries who will then teach others.

CONNECT: mckinneytogo@yahoo.com | eemckinney.com
facebook.com/evelyn.mckinney.14

BCA MISSIONARY NETWORK



Brooke Miller BELIZE

- > Recently moved from Honduras to Belize.
- > Working on developing Children's Ministries across Belize.
- > Serving with ChildHope.

CONNECT: brookemillermissions@gmail.com | brookemillermissions.org
facebook.com/brookeelainemiller



Sean Mills SPAIN

- > International Media Ministries partners with missionaries, media outlets, nationals and churches, in Europe, Eurasia, Africa and Middle East.
- > IMM provides the training for strategic use of video, radio, and media equipment, as well as develops innovative access to the Gospel by producing evangelistic, transformative content.

CONNECT: smills02@gmail.com | facebook.com/Sean.Mills.73



Chris & Heidi Ness SICILY, ITALY

- > Serving the marginalized immigrants and refugees of Sicily, many of whom are African.
- > Their time in Africa learning the culture, Arabic and Amharic, will contribute to the Nesses serving Europe's marginalized in Sicily.

CONNECT: ness.chrism@gmail.com
facebook.com/chris.ness.520



Mike & Kari Ness CAMEROON

- > Missionaries throughout Africa since 1995.
- > Serving to reach the next generation of believers through encouraging and training national believers in Children's Ministries.

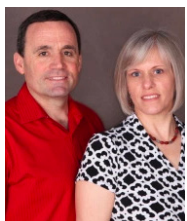
CONNECT: mike.ness@agwmafrica.org | s1.ag.org/nessministries
facebook.com/nessministries



Terry & Marsha Peretti INTERNATIONAL MINISTRIES

- > Former missionaries to Italy, now serving as Network Missionaries with the Northwest Ministry Network.
- > Working with the Harrisons to reach the many ethnic groups in the Northwest and help their churches grow.

CONNECT: terryperetti@live.com
facebook.com/terry.peretti.1



Kurt & Stephanie Plagenhoef ALBANIA

- > Serving in Albania, planting churches, training pastors, and more.
- > Kurt serves as the President of the Evangelical Theological College and Assistant Superintendent of the AG of Albania. Stephanie serves as the Director of Global University Albania.

CONNECT: kurt.plagenhoef@eu.agwm.org | kurtplagenhoef.com
facebook.com/kurt.plagenhoef

BCA MISSIONARY NETWORK



Max & Sylvia Rivera LATIN AMERICA

- > Serving at the Latin America Theological Seminary (LATS).
- > LATS is training hundreds of national leaders in 19 Spanish-speaking countries who in turn are training thousands of new pastors to disciple new believers and develop healthy churches.

CONNECT: rivasgo2teach@gmail.com
facebook.com/max.rivera.1650



Mark & Sunny Rodli THAILAND

- > Working together to reach the lost in Thailand.
- > Serving in church planting initiatives to reach Thais with the message of Christ.

CONNECT: markrodli@gmail.com | markrodli.com
facebook.com/mark.rodli



Mike & Chelly Rody INDONESIA

- > Mike is Executive Pastor of International English Service in Jakarta.
- > Chelly is teaching first grade in a large international school.

CONNECT: mike.rody@gmail.com
facebook.com/Mike.Rody



Jack Rozell AGAPE HOPE

- > Founded Ministry Renewal Asia Pacific (MRAP) in 1996, now known as Agape Hope.
- > Working with those serving on the forefront of global ministry in order to enhance the life quality, ministry effectiveness, and longevity of those who are serving.

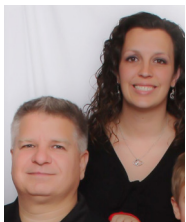
CONNECT: jack@mrp.org | ministryri.org



Lisa Russi FRANCE

- > New missionary to France.
- > Working with women across France in prostitution
- > Providing spiritual care, practical resources, friendship, and community.

CONNECT: Lisa.Russi@gmail.com



Chris & Heather Schneider ARGENTINA

- > Serving in northwest Argentina.
- > After pastoring for 20 years, they became full-time missionaries to Argentina and planted the International Assemblies of God Fellowship in northwest Argentina.

CONNECT: chris.schneider.agwm@gmail.com
schneidersinmissions.blogspot.com | facebook.com/chris.schneider.351

BCA MISSIONARY NETWORK



Bill & Sonia Shaw DR CONGO

- > After 15 years in Chad, they recently moved to the city of Lubumbashi in the DR Congo.
- > Serving with the national church to develop a new network of Bible school extension campuses and the Lubumbashi Leadership Training Center.

CONNECT: bill.shaw.agmd@gmail.com



Steve & Amy Shoop INTERNATIONAL MINISTRIES

- > Serving with ENGAGE Ministries.
- > Reaching teens, the largest unreached people group in the world to help them clarify their destiny and earn a fully accredited, transferable college degree.

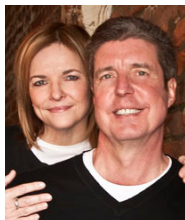
CONNECT: steve@engagemylife.org | engagemylife.com
facebook.com/steven.shoop



Maddy Simpson INDONESIA

- > One of BCA's own, serving at International Christian Assembly (ICA) in Medan.
- > Working throughout the local community and islands of Indonesia in church planting, youth outreach, compassion, and disaster relief.

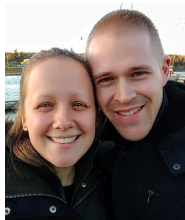
CONNECT: simpsonmadison@gmail.com
facebook.com/maddy.simpson.125



David & Paula Stanislaus INDONESIA

- > New missionaries to Indonesia.
- > Coaching, training, mentoring, and mobilizing missionary leaders.

CONNECT: davidstan55@gmail.com
facebook.com/david.stanislaus.3



Weston & Allison Stover MALAWI

- > Working on AG leadership across Malawi.
- > Working with university students to transform Malawi.
- > Teaching sustainable farming.

CONNECT: weston.stover@agwmafrica.org | Instagram @stoverstories



Dan & Danita Taylor PORTUGAL

- > Recent missionaries to Portugal after serving in Angola.
- > Serving with the national Portuguese AG church to preach, teach, and evangelize throughout the country.

CONNECT: dan.taylor@eu.agwm.org
facebook.com/dan.taylor.12532

BCA MISSIONARY NETWORK



Jay & Cheryl Taylor KENYA

- > Serving Kenya by equipping national church leaders with sound biblical teaching for growing healthy churches.
- > The Taylors will empower missionaries and church planters to advance God's Kingdom across the African continent.

CONNECT: johnandcheryltaylor@gmail.com | jayandcheryl.com
facebook.com/JayandCheryl



John & Korie Taylor INDONESIA

- > Lead Pastor at International Christian Assembly (ICA) in Surabaya.
- > Ministering throughout the local community and the islands of Indonesia in teaching, church planting, and serving the children and families in the red light district.

CONNECT: johnandkorie@gmail.com | johnandkorie.org
facebook.com/johnandkorie



Dave & Patti Thomas ECUADOR

- > Returning to serve in Ecuador, after having previously served for over 15 years throughout Latin America
- > Working to train a fully indigenous national force of teachers, pastors, and missionaries to effectively lead and multiply the church within and beyond the borders of Ecuador.

CONNECT: david@thomasmission.org



Ryan & Christy Thomas SPAIN

- > New missionaries to Valencia Spain
- > Focused on church planting in Valencia and across Spain.

CONNECT: ThomasFamilySpain@gmail.com



Nancy Valnes AUSTRIA

- > Performing research and education in HIV & AIDs care.
- > Working with rehabilitation networks across the globe.
- > Increasing awareness and AG responsiveness.

CONNECT: nancyval@icloud.com | facebook.com/nancy.valnes



John Vincen INDONESIA

- > Serving as a pastor at International Christian Assembly (ICA) in Surabaya.
- > Leading a team at ICA focused on building media materials to reach and disciple Indonesians through their cell phones, with the hope of reaching the 60% of Indonesians who still live in areas with no Christian presence.

CONNECT: johnv72@me.com

BCA MISSIONARY NETWORK



John & Beth Wilson INTERNATIONAL MINISTRIES

> Establish, Strengthen, & Serve Royal Rangers International Ministry in partnership with National churches in 220 Nations and Territories worldwide.

CONNECT: jwilson.krasnodar@gmail.com
facebook.com/beth.wilson.krasnodar



Jonathan & Mary Winter INDONESIA

> Serving in Indonesia since 2006.
> Serving the islands of Indonesia through evangelism, discipleship, and church planting.

CONNECT: jonathan@wintertimes.org | www.wintertimes.org
facebook.com/jonathan.winter



Doug & Kay York NW NATIVE AMERICANS

> Serving at the Swinomish Reservation, based out of LaConner
> Doug is the Native Christian Resource Coordinator and also gives support to the Centers for Native Leadership Development, as well as providing pastoral care to the Swinomish Nation and nearby villages.

CONNECT: douglasyork@usmissions.org | facebook.com/doug.york.5

WHAT DOES IT COST TO KEEP A **MISSIONARY FAMILY** ON THE FIELD?

For individuals and families who work in global missions, where does the money come from that allows them to work full time in ministry, often outside of the US? God has a plan for financing global missions through the offerings and gifts of His people whom He has abundantly blessed.

Today, most governments will not allow missionaries to work and receive wages from the local people. There is also the cost of “doing ministry” in the country. Some missionaries are essentially running a church but they don’t have the funding base from the local community to support it. They need transportation, travel funds, meeting places, equipment for conducting meetings, etc. Other missionaries may be producing materials such as visual or audio media for the local church to use, which is often totally funded by the missionary.

The typical monthly cost for the support and work of an Assemblies of God missionary is between \$8,000 and \$10,000/month. Very few churches can afford to fully support a missionary at that level! Instead, God’s plan was that all churches would pool their resources to support the missionary. The BCA Missions Advisory Team uses the “Missions Giving Pledge” commitments made at Experience Missions to promise support to various missionaries. Once we promise support to the missionaries, they count upon that monthly pledge to do the work God has called them to do. In addition, we respond to special requests for funds for evangelism, training, and discipleship opportunities.

All of this is possible because you make Missions Giving Pledges during the missions convention! Thank you for your continued support of our missionaries!

SUPPORT MINISTRIES

The Assemblies of God World Missions is assisted by several agencies within our Fellowship. Each of these developed as God burdened individuals to challenge a specific segment of Assemblies of God congregations to invest in particular areas of world missions. These auxiliary ministries play a vital role in taking the gospel throughout the world by supporting missionary projects and outreaches.

BOYS AND GIRLS MISSIONARY CHALLENGE

BGMC, formally launched in 1949, is the missions education and fund-raising emphasis for children in the Assemblies of God. Through funds sent to BGMC, missionaries receive educational and evangelism materials to help them reach the lost for Christ. BGMC provides resources to teach children about missions and materials to help in the fund-raising process. For more information, visit bgmc.ag.org.



LIGHT FOR THE LOST

For more than 50 years, Assemblies of God men have dedicated themselves to spreading the gospel through Light for the Lost audio, visual, and printed material that are distributed throughout the world. For more information, visit lftl.ag.org.

US MISSIONS

The United States is a vast mission field. Dedicated men and women are planting churches, establishing Teen Challenge centers, and ministering in hospitals, prisons, and college and university campuses. For more information, visit usmissions.ag.org.



SPEED THE LIGHT

Speed the Light is the youth-initiated ministry that provides transportation and communications equipment to missionaries around the world. Through voluntarily raising funds to purchase equipment, Assemblies of God youth have made STL one of the most effective missions programs in the world. For more information, visit stl.ag.org.



TOUCH THE WORLD

Missions giving has been at the heart of Women's Ministries since 1925. The Touch the World Fund provides indoor equipment and furnishings for Bible schools and institutions worldwide—those in tiny, remote villages, and those in large cities. Missionary Medical Kits are provided in certain countries where health maintenance is difficult. Missionaries and their children receive medication, ointment, disposable medical tools, and free medical services. For more information, visit womensministries.ag.org.

MISSIONARY PRAYER GUIDE

DAY 1

Pray for the missionary's own relationship with God.

- Spiritual growth
- Renewed anointing
- Victory over Satan and the flesh

DAY 2

Pray for the missionary's physical and emotional well-being.

- Health in the midst of disease
- Safety in danger
- Victory over loneliness and depression

DAY 3

Pray for the missionary's family.

- Husband and wife relationships
- Children
- Relationships with others

DAY 4

Pray for the missionary's ability to communicate.

- Language study
- Continual improvement in fluency
- Cultural adaptation and understanding

DAY 5

Pray for the missionary's ministry.

- Teaching, preaching, witnessing
- Boldness, open doors
- Prepared hearts, faithfulness
- Finances

DAY 6

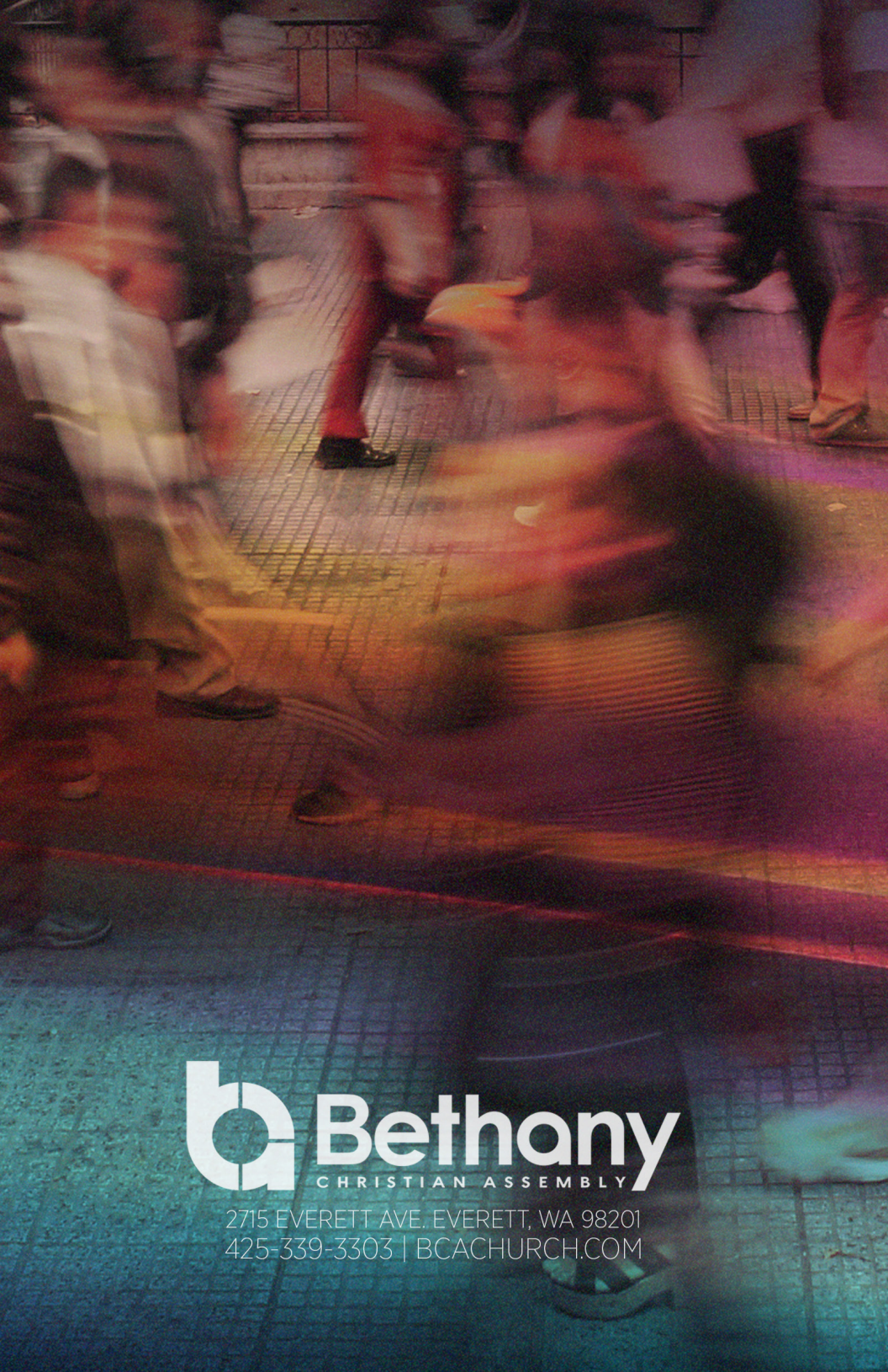
Pray for the missionary's relationships with fellow workers.

- Other missionaries
- National evangelists, pastors, teachers

DAY 7

Pray for the missionary's country of service.

- Government, both national and local
- Political situation
- Visas, continued open door
- Outreach to cities, villages, tribes



b **Bethany**
CHRISTIAN ASSEMBLY

2715 EVERETT AVE. EVERETT, WA 98201
425-339-3303 | BCACHURCH.COM